

Kazimierz Wielki University in Bydgoszcz
Ukrainian Scientific Research Institute of Transport Medicine in Odesa
Nicolaus Copernicus University in Toruń
Matej Bel University in Banská Bystrica
University in Debrecen
National University Physical Education and Sport in Kijev
National Physical Culture University in Lviv
Radom University in Radom

ISSN 2391-8306

Formerly ISSN 1429-9623 / 2300-665X

Journal of Education, Health and Sport formerly Journal of Health Sciences

<http://ojs.ukw.edu.pl/index.php/johs/index>

formerly www.journal.rsw.edu.pl

<https://pbn.nauka.gov.pl/search?search&searchCategory=WORK&filter.inJournal=49068>

<https://pbn.nauka.gov.pl/search?search&searchCategory=WORK&filter.inJournal=36616>

<http://elibrary.ru/contents.asp?titleid=37467>

Open Access

Vol 8 No 2 2018

The journal has had 7 points in Ministry of Science and Higher Education parametric evaluation.

Part B item 1223 (26.01.2017).

Indexed in Index Copernicus Journals Master List. ICV 2016: 84,69; ICV 2015: 93.34 IC Value 2014: 89.51 Standardized Value: 8.27

<http://jml2012.indexcopernicus.com/Journal+of+Education+Health+and+Sport,p24782242,3.html>

Universal Impact Factor 1.78 for year 2012. (<http://www.uifactor.org/AppliedJournals.aspx>)

Indexed in Polish Scholarly Bibliography (PBN) (PBN Polska Bibliografia Naukowa) (<https://pbn.nauka.gov.pl/journals/36616>)

is a portal of the Polish Ministry of Science and Higher Education,

collecting information on publications of Polish scientists and on Polish and foreign scholarly journals.

Polish Scholarly Bibliography is a part of POL-on - System of Information on Higher Education.

It is operated by the Interdisciplinary Centre for Mathematical and Computational Modelling, University of Warsaw.

Indexed in Russian Sciences Index Российский индекс научного цитирования (РИНЦ) <http://elibrary.ru/contents.asp?titleid=37467>

Indexed in Arianta Polish scientific and professional electronic journals Aneta Drabek i Arkadiusz Pulikowski <http://www.arianta.pl>



Scientific Council

prof. zw. dr hab. geo. Z. Babiński (Poland), prof. zw. dr hab. med. T. Chumachenko (Ukraine), prof. zw. dr hab. techn. R. Cichon (Poland), prof. zw. dr hab. med. N. Dragomiretskaya (Ukraine),
prof. zw. dr hab. med. V. Ezhov (Ukraine), prof. zw. dr hab. geo. J. Falkowski (Poland), prof. zw. dr hab. med. A. Gozhenko (Ukraine), prof. zw. dr hab. geo. M. Grodzynski (Ukraine),
prof. zw. dr hab. I. Grygus (Ukraine), prof. zw. dr hab. med. A. Gudyma (Ukraine), prof. zw. dr hab. med. S. Gulyar (Ukraine), prof. zw. dr hab. med. W. Hagner (Poland), prof. dr hab. med. M. Hagner-Derengowska (Poland),
prof. zw. dr hab. med. I. Karwat (Poland), prof. zw. dr hab. med. M. Kyrlyuk (Ukraine), prof. zw. dr hab. med. Y. Limansky (Ukraine), prof. zw. dr hab. geo. A. Melnik (Ukraine), prof. zw. dr hab. med. V. Mizin (Ukraine),
prof. zw. dr hab. med. B. Nasibullin (Ukraine), prof. zw. dr hab. geo. O. Obodovsky (Ukraine), prof. zw. dr hab. med. L. Shafran (Ukraine), prof. zw. dr hab. med. I. Shmakova (Ukraine),
prof. zw. dr hab. O. Sokolov (Ukraine), prof. zw. dr hab. med. V. Stebliuk (Ukraine), prof. zw. dr hab. S. Yermakov (Ukraine),
prof. dr hab. med. A. Avramenko, doc. PaedDr. Elena Bendiková, PhD. (Slovakia), prof. dr hab. K. Buško (Poland), dr hab. med. E. Gozhenko (Ukraine), prof. dr hab. H. Knapik (Poland), dr hab. R. Muszkieta (Poland),
prof. dr hab. med. W. Myśliński (Poland), prof. dr hab. M. Napierała (Poland), prof. dr hab. M. Pastuszko (Poland), prof. dr hab. K. Prusik (Poland), prof. dr hab. M. Zasada (Poland), prof. dr hab. W. Żukow (Poland),
dr med. L. Butskaia (Ukraine), dr I. M. Batyk (Poland), dr M. Cieślicka (Poland), dr med. M. Charzyńska-Guła (Poland), doc. dr n. med. V. Cherny (Ukraine), dr med. K. Cywinski (Poland),
dr med. I. Czerwinska Pawluk (Poland), dr biol. S. Dolomatov (Ukraine), dr med. M. Dzierzanowski (Poland), dr med. B. Jędrzejewska (Poland),
dr med. U. Kazmierczak (Poland), dr med. K. Kiczuk (Poland), dr A. Kostencka (Poland), dr Z. Kwaśnik (Poland), dr med. T. Madej (Poland), dr med. E. Mikołajewska (Poland), dr D. Mikołajewski (Poland),
dr med. B. Muszyska (Poland), dr med. A. Nalazek (Poland), dr med. N. Novikov (Ukraine), dr med. K. Nowacka (Poland), dr M. Podhorecka (Poland), dr med. G. Polak (Poland), dr med. P. Prokopczyk (Poland),
dr med. A. Radzińska (Poland), dr med. L. Sierpińska (Poland), dr Daves Sinch (Republic of India), doc. dr A. Skaliy (Ukraine), dr T. Skaliy (Ukraine),
dr B. Stankiewicz (Poland), dr med. E. Trela (Poland)

Editorial Board

Stefan Adamcak (Slovakia), Pavol Bartik (Slovakia), Elena Bendiková (Czech Republic), Janusz Bielski (Poland), Krzysztof Buško (Poland), Mirosława Cieślicka (Poland), Jerzy Eksterowicz (Poland), Włodzimirz Erdmann (Poland),
Tomasz Frolowicz (Poland), Attila Gilanyi (Hungary), Igor Grygus (Ukraine), Halina Guła-Kubiszewska (Poland), Paweł Izdebski (Poland), Sergii Iermakov (Ukraine), Tetyana Iermakova (Ukraine), Jana Jurikova (Czech Republic),
Vlastimila Karaskova (Czech Republic), Jacek Klawe (Poland), Mariusz Klimczyk (Poland), Alicja Kostencka (Poland), Frantisek Langer (Czech Republic), Eligiusz Madejski (Poland), Jiri Michal (Slovakia), Ludmila Miklankova
(Czech Republic), Emilia Mikołajewska (Poland), Viktor Mishchenko (Ukraine), Stanisław Mocek (Poland), Mirosław Mrozkowiak (Poland), Radosław Muszkieta (Poland), Anna Nalazek (Poland), Marek Napierała (Poland),
Jerzy Nowocien (Poland), Piotr Oleśniwicz (Poland), Władysław Pańczyk (Poland), Wiesława Piławska (Poland), Mirosława Pridalova (Czech Republic), Krzysztof Prusik (Poland), Krzysztof Sas-Nowosielski (Poland), Aleksandr Skaliy
(Ukraine), Tetyana Skaliy (Ukraine), Ewa Sokolowska (Poland), Błażej Stankiewicz (Poland), Robert Stepniak (Poland), Aleksander Stula (Poland), Naoki Suzuki (Japan), Mirosława Szark-Eckardt (Poland), Maciej Świątkowski
(Poland), Hrychory Tereshchuk (Ukraine), Hryhoryi Vasjanovych (Ukraine), Mariusz Zasada (Poland), Tetyana Zavorhodnya (Ukraine), Walery Żukow (Poland), Hanna Żukowska (Poland)

Advisory Board

Zygmunt Babiński (Poland), Yuriy Briskin (Ukraine), Laszlo Cserech (Hungary), Kazimierz Denek (Poland), Mirosław Dutchak (Ukraine), Karol Gorner (Slovakia), Kazimierz Kochanowicz (Poland), Jerzy Kosiewicz (Poland),
Stanisław Kowalik (Poland), Tadeusz Maszczyk (Poland), Mikołaj Nosko (Ukraine), Jerzy Pośpiech (Poland), Eugeniusz Prystupa (Ukraine), Robert Szełklicki (Poland), Jitka Ulrichova (Czech Republic).

Reviewers:

prof. zw. dr hab. geo. Z. Babiński (Poland), doc. PaedDr. Elena Bendiková, PhD. (Slovakia), prof. zw. dr hab. med. T. Chumachenko (Ukraine), prof. zw. dr hab. techn. R. Cichon (Poland),
prof. zw. dr hab. med. N. Dragomiretskaya (Ukraine), prof. zw. dr hab. med. V. Ezhov (Ukraine), prof. zw. dr hab. geo. J. Falkowski (Poland), prof. zw. dr hab. med. A. Gozhenko (Ukraine),
prof. zw. dr hab. geo. M. Grodzynski (Ukraine), prof. zw. I. Grygus (Ukraine), prof. zw. A. Gudyma (Ukraine), prof. zw. dr hab. med. S. Gulyar (Ukraine), prof. zw. dr hab. med. W. Hagner (Poland),
prof. zw. dr hab. med. I. Karwat (Poland), prof. zw. dr hab. med. M. Kyrlyuk (Ukraine), prof. zw. dr hab. med. Y. Limansky (Ukraine), prof. zw. dr hab. geo. A. Melnik (Ukraine), prof. zw. dr hab. med. V. Mizin (Ukraine),
prof. zw. dr hab. med. B. Nasibullin (Ukraine), prof. zw. dr hab. geo. O. Obodovsky (Ukraine), prof. zw. dr hab. med. L. Shafran (Ukraine), prof. zw. dr hab. med. I. Shmakova (Ukraine),
prof. zw. dr hab. O. Sokolov (Ukraine), prof. zw. dr hab. med. V. Stebliuk (Ukraine), prof. zw. dr hab. S. Yermakov (Ukraine),
prof. dr hab. med. A. Avramenko, prof. dr hab. K. Buško (Poland), dr hab. med. E. Gozhenko (Ukraine), prof. dr hab. H. Knapik (Poland), prof. zw. dr hab. geo. A. Melnik (Ukraine),
prof. dr hab. R. Muszkieta (Poland), prof. dr hab. M. Napierała (Poland), prof. dr hab. M. Pastuszko (Poland), prof. dr hab. K. Prusik (Poland),
prof. dr hab. M. Zasada (Poland), prof. dr hab. med. W. Żukow (Poland),
dr I. M. Batyk (Poland), dr med. L. Butskaia (Ukraine), doc. dr n. med. V. Cherny (Ukraine), dr M. Cieślicka (Poland), dr med. I. Czerwinska Pawluk (Poland), dr biol. S. Dolomatov (Ukraine), dr A. Kostencka (Poland),
dr med. N. Novikov (Ukraine), dr M. Podhorecka (Poland), dr med. A. Radzińska (Poland), doc. dr A. Skaliy (Ukraine), dr T. Skaliy (Ukraine), dr B. Stankiewicz (Poland), dr med. E. Trela (Poland)

Editors-in-Chief

Anatoliy Gozhenko

Marek Napierała

Walery Żukow

Co-editors

Associate Editors

Iwona Czerwinska Pawluk

Mariusz Klimczyk

Mirosława Cieślicka

Adam Szulc

Secretary

Bartłomiej Niespodziński

© The Author(s) 2018.

This articles is published with Open Access at Journal of Education, Health and Sport formerly Journal of Health Sciences

of Kazimierz Wielki University in Bydgoszcz, Poland

Open Access This articles is distributed under the terms of the Creative Commons Attribution Noncommercial License which permits any noncommercial use, distribution, and reproduction in any medium, provided the original author(s) and source are credited.



Attribution — You must attribute the work in the manner specified by the author or licensor (but not in any way that suggests that they endorse you or your use of the work).

Noncommercial — You may not use this work for commercial purposes. **Share Alike** — If you alter, transform, or build upon this work, you may distribute the resulting work only under the same or similar license to this one.

Declaration on the original version. Because of the parallel version of the magazine publishing traditional (paper) and of electronic (online), Editors indicates that the main version of the magazine is to issue a "paper"

Zawartość tegoż czasopisma jest objęta licencją Creative Commons Uznanie autorstwa-Użycie niekomercyjne-Na tych samych warunkach 3.0

Editorial Office

Instytut Kultury Fizycznej Uniwersytet Kazimierza Wielkiego w Bydgoszczy

85-091 Bydgoszcz ul. Sportowa 2 Tel. +48 523231706 www.ukw.edu.pl

Copyright by Instytut Kultury Fizycznej UKW w Bydgoszczy

ISSN 2391-8306

Formerly ISSN:1429-9623 / 2300-665X

Bieniak Monika, Łuczyk Robert, Wysokiński Mariusz, Fidecki Wiesław. Health behaviour of patients with unstable angina pectoris. *Journal of Education, Health and Sport*. 2018;8(02):196-213. eISSN 2391-8306. DOI <http://dx.doi.org/10.5281/zenodo.1174001>
<http://ojs.ukw.edu.pl/index.php/johs/article/view/5286>

Piech Piotr, Polak Paweł, Koziol Maciej, Obierzyński Paweł, Staśkiewicz Grzegorz, Neścior Małgorzata. The influence of thickness of ACL tendon graft on long-term results of treatment. *Journal of Education, Health and Sport*. 2018;8(02):214-230. eISSN 2391-8306. DOI <http://dx.doi.org/10.5281/zenodo.1174039>
<http://ojs.ukw.edu.pl/index.php/johs/article/view/5288>

Vlasova O.V. Risk of developing congenital malformations in infants whose mothers live under unfavourable geochemical conditions. *Journal of Education, Health and Sport*. 2018;8(2):231-234. eISSN 2391-8306. DOI <http://dx.doi.org/10.5281/zenodo.1175175>
<http://ojs.ukw.edu.pl/index.php/johs/article/view/5289>

Potapchuk Olga. Application of Web-technologies in the educational process of higher educational institutions of Ukraine. *Journal of Education, Health and Sport*. 2018;8(2):235-242. eISSN 2391-8306. DOI <http://dx.doi.org/10.5281/zenodo.1175249>
<http://ojs.ukw.edu.pl/index.php/johs/article/view/5290>
<https://pbn.nauka.gov.pl/sedno-webapp/works/855746>

Guty Edyta, Puszkarz Irena, Stefaniak Iwona. Mental Disorders related to stroke. *Journal of Education, Health and Sport*. 2018;8(2):243-249. eISSN 2391-8306. DOI <http://dx.doi.org/10.5281/zenodo.1182707>
<http://ojs.ukw.edu.pl/index.php/johs/article/view/5299>

Rynzhuk Larisa Vasylyvna, Rynzhuk Vasyl Yefremovych, Gresko Marina Dmitryina, Bulik Tatyana Sergiyvna, Sheremet Anastsia Mihaylivna. Peculiarities of the colon microflora condition in pregnant women with asymptomatic bacteriuria. *Journal of Education, Health and Sport*. 2018;8(2):250-255. eISSN 2391-8306. DOI <http://dx.doi.org/10.5281/zenodo.1182741>
<http://ojs.ukw.edu.pl/index.php/johs/article/view/5302>
<https://pbn.nauka.gov.pl/sedno-webapp/works/856616>

Tiupka T. I., Zalyubovska O. I., Zlenko V. V., Avidzba Yu. N., Litvinenko M. I., Minaieva A. O. Disorders of water-electrolyte metabolism in pulmonary edema under inhibition of the renin-angiotensin-aldosterone system. *Journal of Education, Health and Sport*. 2018;8(2):256-262. eISSN 2391-8306. DOI <http://dx.doi.org/10.5281/zenodo.1185341>
<http://ojs.ukw.edu.pl/index.php/johs/article/view/5313>
<https://pbn.nauka.gov.pl/sedno-webapp/works/858082>

Dikal M. V., Ferenchuk Ye. O., Bilous T. M., Grytsiuk M. I., Kopchuk T. G. Biochemical and histochemical changes in the activity of succinate dehydrogenase and ATP-ase in mitochondria of kidneys rats by acute intoxication. *Journal of Education, Health and Sport*. 2018;8(2):263-271. eISSN 2391-8306. DOI <http://dx.doi.org/10.5281/zenodo.1185391>
<http://ojs.ukw.edu.pl/index.php/johs/article/view/5314>
<https://pbn.nauka.gov.pl/sedno-webapp/works/858097>



Dikal M. V., Ferenchuk Ye. O., Bilous T. M., Grytsiuk M. I., Kopchuk T. G. Biochemical and histochemical changes in the activity of succinate dehydrogenase and ATP-ase in mitochondria of kidneys rats by acute intoxication. *Journal of Education, Health and Sport*. 2018;8(2):263-271. eISSN 2391-8306. DOI <http://dx.doi.org/10.5281/zenodo.1185391>
<http://ojs.ukw.edu.pl/index.php/johs/article/view/5314>
<https://pbn.nauka.gov.pl/sedno-webapp/works/858097>

The journal has had 7 points in Ministry of Science and Higher Education parametric evaluation, Part B item 1223 (26.01.2017).
1223 Journal of Education, Health and Sport eISSN 2391-8306 7

© The Authors 2018;

This article is published with open access at Licensee Open Journal Systems of Kazimierz Wielki University in Bydgoszcz, Poland

Open Access. This article is distributed under the terms of the Creative Commons Attribution Noncommercial License which permits any noncommercial use, distribution, and reproduction in any medium, provided the original author(s) and source are credited. This is an open access article licensed under the terms of the Creative Commons Attribution Non Commercial License (<http://creativecommons.org/licenses/by-nc/4.0/>) which permits unrestricted, non commercial use, distribution and reproduction in any medium, provided the work is properly cited.
This is an open access article licensed under the terms of the Creative Commons Attribution Non Commercial License (<http://creativecommons.org/licenses/by-nc/4.0/>) which permits unrestricted, non commercial use, distribution and reproduction in any medium, provided the work is properly cited.
The authors declare that there is no conflict of interests regarding the publication of this paper.
Received: 01.02.2018. Revised: 05.02.2018. Accepted: 26.02.2018.

	<p>"Pathological Physiology of Kidneys & Water Salt Homeostasis"</p> <p>February, 15-16, Odessa <i>Materials of conference</i></p>	
---	---	---

UDC 577.152.1.008.5:616.61-008.64-099]-092.9

**BIOCHEMICAL AND HISTOCHEMICAL CHANGES IN THE ACTIVITY OF
SUCCINATE DEHYDROGENASE AND ATP-ASE IN MITOCHONDRIA OF
KIDNEYS RATS BY ACUTE INTOXICATION**

M. V. Dikal, Ye. O. Ferenchuk, T. M. Bilous, M. I. Grytsiuk, T. G. Kopchuk

**Higher State Educational Establishment of Ukraine
«Bukovinian State Medical University», Chernivtsi, Ukraine**

dikalmariana@gmail.com

Abstract

Object of the study was to evaluate activities of succinate dehydrogenase and ATP-ase in mitochondria of kidney under conditions of toxic influence of 2,4-dinitrophenol. The experiment was conducted on 60 male albino rats. Toxic damage was caused by 0.1% solution of 2,4-dinitrophenol intraperitoneally in the dose of 3 mg / kg. The histochemical, biochemical and statistical methods of research were used. Mitochondria isolation was performed using the method of differential centrifugation. Determination of mitochondrial succinate dehydrogenase activity consists in the restoration of potassium ferricyanide ($K_3[Fe$

(CN)₆], whose solution has a yellow color, to the colorless ferricyanide of potassium (K₄[F(CN)₆]) succinate by the action of succinate dehydrogenase. The activity of ATP-ase was determined by the accumulation of inorganic phosphate.

The level of activity of succinate dehydrogenase was 39% lower than that of the control values. Whereas the level of activity of ATP-ase decreased by 48% in accordance with the control. Similar histochemical changes of the enzyme of the II complex of the mitochondrial respiratory chain were revealed.

The findings revealed that 2,4-dinitrophenol produced significant biochemical and histochemical changes in the kidney of the rats. This led to a decrease enzyme activities and as a result to a discrepancy between the energy needs of the cell and energy production in the system of mitochondrial oxidative phosphorylation.

Key words: mitochondria, kidney, 2,4-dinitrophenol, succinate dehydrogenase, ATP-ase activity.

Introduction. Mitochondria regulate key cellular processes, from energy production to apoptosis, and measuring their function is important for understanding different aspects of cellular metabolism. The inner membrane of the mitochondria comprises of the highest number of proteins per phospholipid moiety in a cell. These proteins are integral to the electron transport chain, ATP synthesis and transport. The inner membrane is also less permeable to ions and molecules and helps in compartmentalization through separation of the mitochondrial matrix from the cytosolic environment, there by acting as an electrical insulator and chemical barrier. This helps in leaving of the electron gradient across the membrane, which enables generation of universal value of energy – ATP [1].

In fact, the variety of reactive molecules is formed at all levels during the execution of physiological functions of the cell. Mitochondria are the source of most reactive oxygen species in cells, and the electron transport chain is responsible for most of the superoxide that is generated through partial reduction of oxygen. As the main sites of reactive oxygen species production are regarde mitochondrial complex I and III. But the mitochondrial complex II has been the subject of renewed interest over the past years. Newly some studies have demonstrated that succinate dehydrogenase (SDH) also contributes to mitochondrial reactive oxygen species production at the FAD-binding site through the monovalent electron reduction of O₂ [11, 13]. In addition, SDH has been recognized as an indirect modulator of superoxide production by complexes I and III. Recent research has provided irrefutable evidence that reactive oxygen is important mediator of cellular response to stress and they function through

several mechanisms including, modulation of autophagy, mitochondrial network, signaling and apoptosis [5].

Succinate dehydrogenase (SDH; succinate: ubiquinone oxidoreductase; mitochondrial complex II) plays a central role in mitochondrial metabolism, catalyzing the oxidation of succinate to fumarate and the reduction of ubiquinone to ubiquinol, thereby linking the tricarboxylic acid cycle and the electron transport system.

Classically, SDH is composed of four subunits. SDH is the oxidative phosphorylation complex to lack subunits encoded by the mitochondrial genome and the only respiratory complex to not pump protons across the inner membrane during its catalytic cycle. The structure of the complex of SDH consists of a hydrophilic head that protrudes into the matrix compartment and a hydrophobic tail that is embedded within the inner membrane with a short segment projecting into the soluble intermembrane space [8].

The catalytic activity of SDH is modulated by post-translational phosphorylation and acetylation as well as active site inhibition.

SDH catalytic activity is also modulated by Krebs cycle intermediates including oxaloacetate, which is a potent inhibitor. Succinate promotes the dissociation of oxaloacetate from SDH there by activating the enzyme. The oxaloacetate inhibition may contribute to the known modulation of SDH activity by the metabolic status of mitochondria. Other specific inhibitors of the enzyme are malonate, mercurial compounds, maleic acid N-alkylamides, phenylglyoxal, 2,3-butanedione, and some carboxylic acid esters [5, 6].

We propose that the wide clinical spectrum of specific roles of the SDH in the respiratory chain in the mitochondria and in the Krebs cycle could confer to the SDH a specific function in kidneys under condition of intoxication processes.

Therefore, the study of the biochemical and histochemical enzyme activity of succinate dehydrogenase in the kidneys under conditions of toxic influence of 2,4-dinitrophenol has an important diagnostic value as a marker of energy metabolism and oxidative phosphorylation under various pathological conditions.

To investigate the link between 2,4-dinitrophenol and mitochondrial energy production, appropriate methods are needed to quantify changes both in mitochondrial form and function.

Objective. To determine activities of mitochondrial enzymes by biochemical and histochemical methods.

Materials and methods. The experiment was conducted on 60 male albino rats with the body weight 0.16 – 0.2 kg.

The rats were divided into groups: 1) control rats (C); 2) experimental rats (E). Toxic damage was caused by 0.1% solution of 2,4-dinitrophenol intraperitoneally in the dose of 3 mg / kg [10]. All manipulations with animals were carried out according to European Convention for the Protection of Vertebrate Animals used for Experimental and Other Scientific Purposes and law of Ukraine "On protection of animals from cruelty". Rats were kept under the standard vivarium conditions at constant temperature and basic allowance. Animals were narcotized with chloroform and then sacrificed using cervical dislocation. All procedures were executed separately from other rats.

Mitochondria isolation was performed using the method of differential centrifugation in the buffer (250 mM sucrose, 1 mM EDTA, 10 mM Tris-HCl, pH 7.4). The kidneys were washed with a cooled 0.9% solution of KCl (2-4 ° C), chopped and homogenized in 10 times the volume of buffer (mmol/l): sucrose - 250, EDTA - 1, tris-HCl - 25, pH 7.4. The homogenate was centrifuged at 700 g 10 min (4° C), and the supernatant - at 11000 g 20 min (4° C). The precipitate was resuspended in 5 ml of the same buffer (without EDTA) and centrifuged again under the same conditions. The resulting precipitate (mitochondrial fraction) was resuspended in buffer (mmol/l): sucrose - 250, EDTA - 1, tris-HCl - 25, pH 7.4, and used immediately in experiments [12]. Determination of mitochondrial succinate dehydrogenase activity consists in the restoration of potassium ferricyanide ($K_3[Fe(CN)_6]$), whose solution has a yellow color, to the colorless ferricyanide of potassium ($K_4[Fe(CN)_6]$) succinate by the action of succinate dehydrogenase. To incubation solution (10 mM phosphate buffer (pH = 7.8), 5 mM succinic acid, 1.25 mM EDTA, 7.5 mM sodium azide) was added to the suspension of mitochondria (0.2 ml). Samples were incubated at room temperature for 5 minutes. The reaction was initiated by the addition of 1.25 mM potassium ferricyanide solution to the samples. Samples were incubated for 10 minutes at + 30°C. After incubation, the reaction was stopped by lowering the sample temperature to 0°C. In control samples containing all components of the incubation mixture, CCl_3COOH was added before the introduction of the mitochondrial suspension. After stopping the reaction the sample was photometrised by $\lambda=420$ nm. The activity of the enzyme is proportional to the amount of ferricyanide [2]. The activity of ATP-ase was determined by the accumulation of inorganic phosphate. The activity was determined in an incubation solution contained 400 μ mol of tris-HCl (pH 7.4), 5 μ mol of ATP disodium salt, 7.5 μ mol of $MgSO_4$, $5 \cdot 10^{-2}$ μ mol of 2,4-dinitrophenol, 7.5 μ mol of $CaCl_2$, 120 μ mol of NaCl, 20 μ mol of KCl. The reaction was initiated by the addition of 50 μ l of a mitochondria suspension containing 1 mg of protein,

incubated for 15 minutes at 37°C. The reaction was stopped by the addition of 1 ml of 10% CCl_3COOH . The contents of Pi were determined colorimetrically [4].

Some kidney biopsies were rapidly extracted, frozen at -15°C in cryostat and 10 μm thick sectioned then incubated in equal volumes of 0.2 M phosphate buffer with 0.2 M sodium succinate to be mixed with equal volume of nitroblue tetrazolium in distilled water solution (1 mg/1 ml) for 10-20 minutes at 37°C for histochemical configuration of succinic dehydrogenase. Other kidney biopsies were fixed in 10% buffered formal saline, dehydrated in ascending grades of ethanol, cleared in xylene, infiltrated-impregnated in soft paraffin at 50°C and embedded in paraplast paraffin wax. Solid paraffin blocks were cut into 5 μm thick sections by rotator microtome and then mounted on glass slides covered by albumin glycerin. Multiple histological and histochemical stains were utilized to ensure reliability of these techniques in explaining the parallel results whether confirmatory or contradictory.

Histochemical determination of enzyme activity of succinate dehydrogenase. In a cryostat, sections of 10 μm thick tissue are prepared and applied on a slide glass. The incisions are then incubated at a temperature of 20-25°C. Mix the levels of 0,2 M phosphate buffer (pH 7,6) and 0,2 M solution of sodium succinate. To 10 ml of solution add 10 mg of nitrosine tetrazolium and incubate until intense violet color.

Statistical processing of the obtained data was performed with the establishment of mean values, standard errors, confidence intervals. To estimate the probability of differences in comparison of studied groups, Wilcoxon's coefficient was used. The difference between groups was considered to be significant at the level of $P < 0,001$.

Results and discussion. The use of 2,4-dinitrophenol in the experimental group of animals results in damage to the mitochondria of the nephrocytes and electron transport by the respiratory chain, decrease in the activity of succinate dehydrogenase and, consequently, reduction of the compensatory potential of the energy supply system (Fig. 1). The violation of energy metabolism is indicated by a decrease in the activity of succinate dehydrogenase by 30% compared to the control group of animals.

This was also clear with histoenzymological survey through histochemical SDH test which showed marked decrease of enzyme activity among test animals group especially in the proximal tubules areas (Fig. 2) and activation of the enzyme in the distal nephron in comparison with the control (Fig. 3). This could be explained by the use of the present study an model of intoxication that made a rapid affection of enzymatic activity and metabolism.

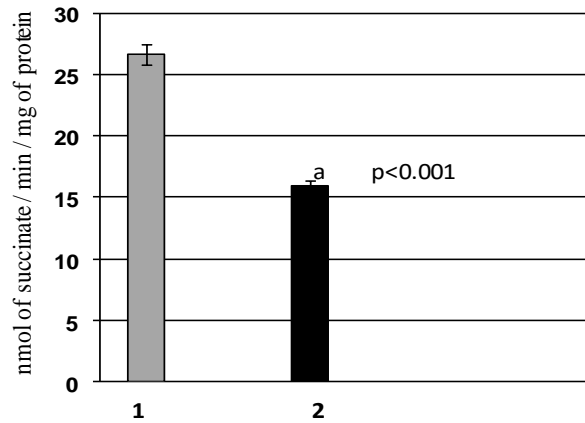


Fig. 1 The activity of succinate dehydrogenase in mitochondria of the kidneys under conditions of introduction of 2,4-dinitrophenol. 1 – control, 2 – experiment; a – significant changes compared to the control; p – the reliability of the difference compared with the control.

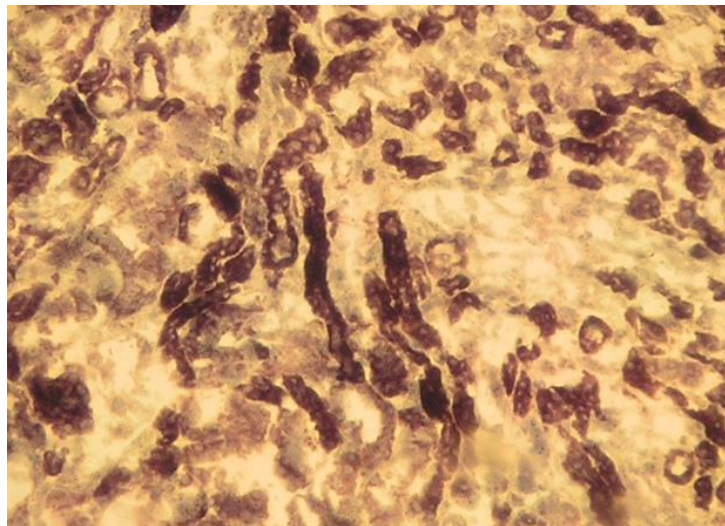


Fig. 2. Photomicrograph of SDH reacted kidney sections showed decrease of activity of succinate dehydrogenase in proximal tubules and its activation at the level of distal parts of nephoron in kidney cortical substance under conditions of introduction of 2,4-dinitrophenol (x56, SDH).

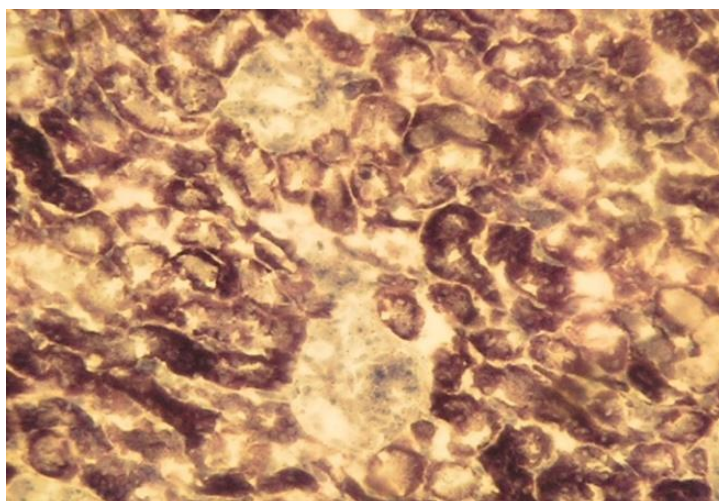


Fig. 3. Photomicrograph of SDH reacted kidney sections showed activity of succinate dehydrogenase in proximal and distal tubules in kidney cortical substance of control animals group (x56, SDH).

The reducing of the activity of succinate dehydrogenase activity causes inhibition of activity of ATP-ase in the kidney (Fig. 4). And under conditions of decrease of ATP the effective implementation of the kidneys is impossible as the functioning of the energy supply system of the mitochondria of the nephrocytes is impaired [3, 7, 9].

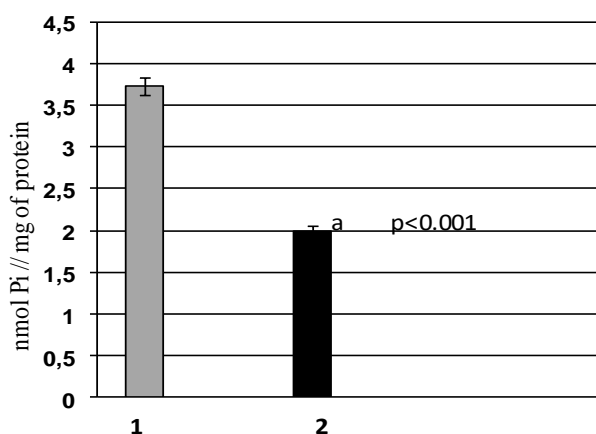


Fig. 4 The activity of ATP-ase in mitochondria of the kidneys under conditions of introduction of 2,4-dinitrophenol. 1 – control, 2 – experiment; a – significant changes compared to the control; p – the reliability of the difference compared with the control.

Consequently, the introduction of 2,4-dinitrophenol leads to a decrease in the activity of enzymes in the respiratory chain of the mitochondria of the nephrocytes and proximal tubules of the nephron, due to the splitting of oxidation and phosphorylation, and

hyperproduction of the reactive oxygen species caused the activation of peroxide oxidation of lipids and proteins.

Conclusions. Diseases of the kidneys are characterized by pathological changes in transport processes in the tubular sections of the nephron. By dissociation of the processes of oxidation and phosphorylation 2,4-dinitrophenol causes the development of acute tissue hypoxia. This led to a violation of the intra-mitochondrial transport of protons and electrons by the respiratory chain by reducing the succinate-dehydrogenase activity and a violation of the synthesis of ATP. There was a discrepancy between the energy needs of the cell and energy production in the system of mitochondrial oxidative phosphorylation.

References

1. Benard G, Bellance N, James D, Parrone P, Fernandez H, Letellier T & Rossignol R. Mitochondrial bioenergetics and structural network organization. *J Cell Sci.* 2007; 120: 838-48.
2. Elshennawy ATM, Sayed SR, et al. Histopathological and Histochemical Assessment of the Protective Effects of Zinc on Ethanol-Induced Acute Hepatotoxicity in Adult Albino Rats. *J.Cytol. Histol.* 2015; 6: 321.
3. Faccenda D. Molecular Regulation of the Mitochondrial F_1F_0 -ATPsynthase: Physiological and Pathological Significance of the Inhibitory Factor 1 (IF1). *Int. J. Cell Biol.* 2012; 40 (12): 2698–701.
4. Gabibov MM. Influence of hyperbaric oxygenation on the activity of proton ATPase mitochondria of various tissues of rats. *Ukr, biochem. journ.* 1986; 58 (5): 68-71.
5. Gutman M, Silman N. The steady state activity of succinate dehydrogenase in the presence of opposing effectors.II. Reductive activation of succinate dehydrogenase in presence of oxaloacetate. *Mol Cell Biochem* 1975;7(3):177–185.
6. Hagerhall C. Succinate: quinone oxidoreductases. Variations on a conserved theme. *Biochim Biophys Acta* 1997;1320(2):107–141.
7. Hajjawi O.S.Succinate Dehydrogenase: Assembly, Regulation and Role in Human Disease. *Eu. J. Sc. Res;* 51 (1): 133 – 42.
8. King A, Selak MA, et al. Succinate dehydrogenase and fumarate hydratase: linking mitochondrial dysfunction and cancer. *Oncogene* 2006;25(34):4675–4682.
9. Mahran AA, Husam Eldien HO, Abd El-Mawla AMA, Attia AM. Protective effect of zinc (Zn) on the histology and histochemistry of liver and kidney of albino rat treated with cadmium. *J Cytol Histol.* 2011; (2):120 – 3.

10. Rogovy Yu.E., Belyavsky V.V., Dikal M.V. Modified proteins in the kidneys and the liver with intoxication with 2,4-dinitrophenol and the effects of melatonin in the experiment. *Clin.Anat. and surgery.* 2011; 10 (3): 18-21.
11. Sun F, Huo X, et al. Crystal structure of mitochondrial respiratory membrane protein complex II. *Cell* 2005;121(7):1043–1057.
12. Weinbach TC. A procedure for isolating stable mitochondria from rat liver and kidney. *Analyt.Biochem.* 1961; 2: 335-343.
13. Yankovskaya V, Horsefield R, et al. Architecture of succinate dehydrogenase and reactive oxygen species generation. *Science* 2003; 299(5607):700–704.